

SwingStar / BuffStar

SS1715/E, SS2010/E, SS2015/E, SS2015DS/E,
SS2015HS/E

Electric Buffer/Burnisher

Operator's Manual



© 2000 Pioneer Eclipse Corporation

Pioneer Eclipse

RECORD THIS IMPORTANT INFORMATION

Date of Purchase: _____

Purchased From: _____

Address: _____

City: _____ State: _____ Zip: _____

Phone: _____ Contact: _____

Machine Serial Number: SS2010 _____

Machine Model: _____

IMPORTANT PHONE NUMBERS

Medical Emergency: _____

Police: _____

Fire Department: _____

W e l c o m e

Congratulations on purchasing a Pioneer Eclipse SwingStar or BuffStar electric buffer or burnisher. We know that you will be pleased with the quality and dependability of your new floor machine. The SwingStar and BuffStar line of electric buffers and burnishers feature:

- ♦ Dual trigger negative pressure switch allows operator to run with either hand.
- ♦ Safety switch lock mechanism prevents accidental start.
- ♦ Steel transmission gears give outstanding wear and durability.
- ♦ Planetary gearbox means strength.
- ♦ Premium 66 frame motor provides better cooling and more torque with long motor life.
- ♦ One piece welded heavy gauge steel handles give superior handling stability.
- ♦ Ergonomically designed foot operated positive lock handle adjustment eliminates bending.
- ♦ High strength steel frames withstand heavy-duty wear situations.

Please read this manual carefully. It will acquaint you with the care, safe handling and operation of the SwingStar and BuffStar.

Table of Contents

1. Machine Specifications	3
2. Service Information	4
3. Important Safety Instructions	4
4. Grounding Instructions	5
5. Operation/Accessories	
a. Brush and Pad Driver Installation	6
b. Adjustments	7
c. Controls	7
d. Guidelines for Operation	8
e. Cord Storage	9
6. Clean Up and Storage	9
7. Drawings and Parts Lists	
Wiring Diagram SS1715, SS2010, SS2015	11
Wiring Diagram SS1715E, SS2010E, SS2015E	11
Wiring Diagram SS2015DS	12
Wiring Diagram SS2015DSE	12
Wiring Diagram SS2015HS	13
Machine Assembly SS1715/E, SS2010/E, SS2015/E, SS2015DS/E	14
Machine Assembly SS2015HS/E	16

Machine Specifications

SS1715/E

Pad Size: 17"
Performance: 6,000 sq ft/hr (540 m²)
Width: 17.5" (44,5 cm)
Length: 22.5" (57 cm)
Height: 45" (114,3 cm)
Weight: 105 lbs. (47,6 kg)
Voltage: 115V or 230V
Power Cord: 50 ft. (15,2 m); 14-3 ST fixed
Motor: 1.5 HP / 66 Frame
RPM (Brush/Pad): 175
Gear Box: Planetary 3-Idler; Steel Cut Helical Gears
Sound Level: 75 db(A)
Vibration: Does not exceed 0.5 m/s²

SS2010/E

Pad Size: 20"
Performance: 7,000 sq ft/hr (630 m²)
Width: 20" (51 cm)
Length: 24" (61cm)
Height: 45" (114,3 cm)
Weight: 97 lbs. (44 kg)
Voltage: 115V or 230V
Power Cord: 50 ft. (15,2 m); 14-3 ST fixed
Motor: 1 HP / 66 Frame
RPM (Brush/Pad): 175
Gear Box: Planetary 2-Idler; Steel Cut Helical Gears
Sound Level: 75 db(A)
Vibration: Does not exceed 0.5 m/s²

SS2015/E

Pad Size: 20"
Performance: 7,000 sq ft/hr (630 m²)
Width: 20" (51 cm)
Length: 24" (61cm)
Height: 45" (114,3 cm)
Weight: 109 lbs. (49,4 kg)
Voltage: 115V or 230V
Power Cord: 50 ft. (15,2 m); 14-3 ST fixed
Motor: 1.5 HP / 66 Frame
RPM (Brush/Pad): 175
Gear Box: Planetary 3-Idler; Steel Cut Helical Gears
Sound Level: 75 db(A)
Vibration: Does not exceed 0.5 m/s²

SS2015DS/E

Pad Size: 20"
Performance: 7,000 sq ft/hr (630 m²)
Width: 20" (51 cm)
Length: 24" (61cm)
Height: 45" (114,3 cm)
Weight: 103 lbs. (46,7 kg)
Voltage: 115V or 230V
Power Cord: 50 ft. (15,2 m); 14-3 ST fixed
Motor: 1.5 HP / DC Rectified
RPM (Brush/Pad): 175/300
Gear Box: Planetary 2-Idler; Steel Cut Helical Gears
Sound Level: 75 db(A)
Vibration: Does not exceed 0.5 m/s²

SS2015HS/E

Pad Size: 20"
Performance: 14,000 sq ft/hr (1301 m²)
Width: 20" (51 cm)
Length: 29" (73,7cm)
Height: 49" (124,5 cm)
Weight: 112 lbs. (50,8 kg)
Voltage: 115V or 230V
Power Cord: 50 ft. (15,2 m); 14-3 ST fixed
Motor: 1.5 HP / DC Rectified
RPM (Brush/Pad): 1500
Drive: Multi-V Belt
Sound Level: 75 db(A)
Vibration: Does not exceed 0.5 m/s²

Service Information

Service Information

To obtain consistent performance over the life of your equipment, read through these instructions and save them for future reference. If you require service, contact the Pioneer Eclipse Authorized Distributor from which the machine was purchased or any authorized Pioneer Eclipse Service Center. Always refer to your Limited Warranty for complete service information.

SERIAL NO.		MODEL
VOLTS	PHASE	HZ
MOTOR	AMPS	H.P.

The model, type and serial number are indicated on the data plate on the side of the handle. For prompt and complete service, refer to these numbers when inquiring about service.

Important Safety Information

When using an electrical appliance, basic precautions should always be followed, including the following:

READ ALL INSTRUCTIONS BEFORE USING THIS FLOOR MACHINE.

WARNING: ELECTRIC SHOCK CAN CAUSE SERIOUS INJURY OR BE FATAL. PLEASE READ THE FOLLOWING INSTRUCTIONS ON THE USE AND OPERATION OF THE BUFF STAR AND SWING STAR MACHINES.

- ◆ Your floor machine is equipped with a safety switch lock and power switch trigger designed for your safety. Do not attempt to bypass or defeat the safety switch lock. Never use any device to lock the power switch triggers in the "ON" position.
- ◆ Do not leave the floor machine when plugged in. Turn off the switch and unplug the electrical cord when not in use and before servicing or changing the brushes or pads.
- ◆ Do not allow the machine to be used as a toy. Close attention is necessary when used near children. Do not leave the machine connected to an electrical outlet unattended.
- ◆ Use only as described in this manual. Use only manufacturer's recommended attachments.
- ◆ Do not use with a damaged cord or plug. If the machine is not working as it should, has been dropped, damaged, or left outdoors, return it to a service center before using.
- ◆ Use care to keep the electrical supply cord from contacting the rotating brush or drive block.
- ◆ Do not pull, close a door on, or pull the cord around sharp edges or corners. Keep the cord away from heated surfaces.
- ◆ Connect to properly grounded (3-wire) outlet only. Refer to Grounding Instructions.
- ◆ Do not use extension cords or outlets with inadequate current carrying capacity.
- ◆ Turn off all controls before unplugging.
- ◆ Do not unplug by pulling on cord. To unplug, grasp the plug, not the cord.
- ◆ Do not handle the plug or floor machine with wet hands.
- ◆ Wind the cord no tighter than is necessary to retain it during storage. Refer to Cord Storage.
- ◆ Use extra care when working near stairs.
- ◆ Do not use in conjunction with flammable or combustible liquids such as gasoline, or use in areas where explosive vapor or dust may be present.
- ◆ Store your floor machine indoors in a cool, dry area.
- ◆ Keep your work area well lighted.
- ◆ Warning — To avoid electrical shock, use indoors only.

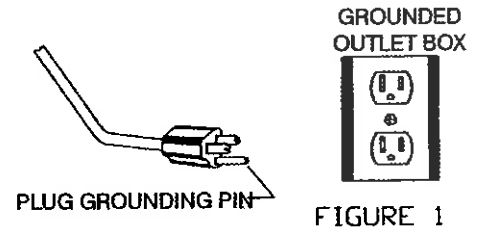
Grounding Instructions

This appliance must be grounded. If it should malfunction or break down, grounding provides a path of least resistance for electric current to reduce the risk of electric shock. This appliance is equipped with a cord having an equipment grounding conductor and grounding plug. The plug must be plugged into an appropriate outlet that is properly installed and grounded in accordance with all local codes and ordinances.

For floor finishing machines rated less than 150 volts:

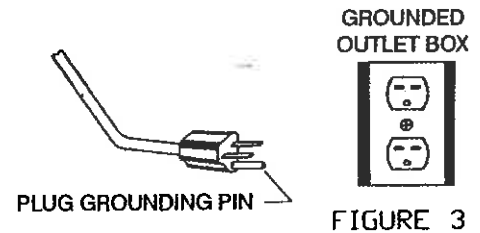
WARNING: DO NOT USE GROUNDING ADAPTERS ON FLOOR MACHINES IN CANADA. CHECK WITH CANADIAN CODES FOR PROPER EQUIPMENT USAGE. IMPROPER USE OF GROUND ADAPTERS CAN CAUSE SERIOUS INJURY, FIRE OR BE FATAL.

Improper connection of an equipment grounding conductor can result in risk of electric shock. Check with a qualified electrician or service person if you are in doubt as to whether the outlet is properly grounded. Do not modify the plug provided with the appliance. If it will not fit the outlet, have a proper outlet installed by a qualified electrician. This appliance is for use on a nominal 120-volt circuit and has a grounding plug that looks like the plug illustrated in Figure 1.



For floor finishing machines rated 230V:

If the machine is provided with an attachment plug cap as shown in Figure 3, it is intended for use on a 240 volt (nominal) circuit.



Operation/Accessories

Choosing the Right Brush and Drive Block

Your floor machine is packed completely assembled and ready for use after you install a brush or drive block.

Your floor machine is designed to be used for many different floor care applications. Make sure you use the correct brush or pad for the type of job you want to perform. Please check with your Pioneer Eclipse Authorized Distributor to determine pad or brush needs.

When ordering brushes or drive blocks, refer to the following chart and specify correct brush or block diameter when ordering.

Machine Size	Brush Diameter	Block Diameter
17"	17"	15"
20"	20"	18"

Brush and Pad Drive Installation

NOTE: Disconnect the power cord from the electrical outlet before installing a brush or pad driver.

To install a brush or pad driver, leave the handle in the upright position and tip the machine backwards so it rests on its wheels and upper handle section (fig 4). The brush and pad driver both attach in the same manner:

- Align the cutouts on the inner ring of the brush or pad driver with the tabs on the inside of the ring of the drive hub (fig 5).
- Push the brush or pad driver firmly into position, then turn it counter-clockwise until it locks into place.

To remove, turn the brush or pad driver clockwise until it stops, then lift it off.

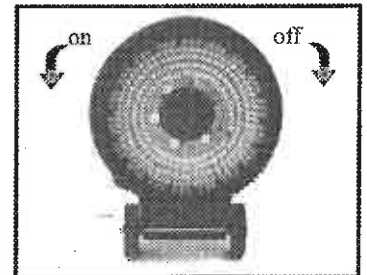
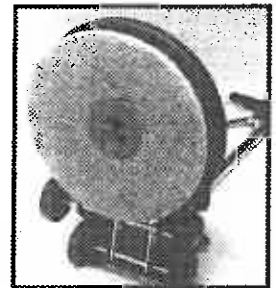


fig. 4



Pad Centering Lock (SS2015HS/E only)

To install a pad, tip the machine backwards so it rests on the rear wheels and handle. After centering the pad on the pad holder, insert the Pad Centering Lock and twist it clockwise until it securely locks in place. fig. 5
To remove, twist the lock counterclockwise.

Adjustments

Drive Belt Adjustment (SS2015HS/E only)

NOTE: Disconnect power cord from electrical outlet before adjusting drive belt tension.

1. Loosen the bolts holding the drive motor to the frame; do not remove (fig 8).
2. Turn the two screws at the rear of the frame until the belt is tight.
3. Test the machine. If belt slips, adjust further. Retest. If the belt does not slip, tighten the drive motor bolts. DO NOT over-tighten the drive belt.

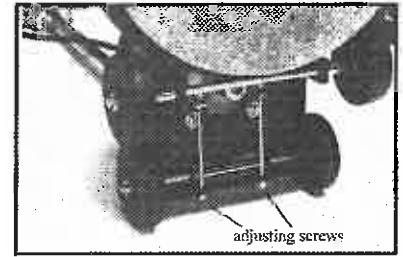


fig. 8

Handle Adjustment

The handle can be adjusted to any desired work position by simply pushing up on the handle lock (fig 6). Move the handle to the desired position, then firmly push down on the handle lock which will lock the handle in position.

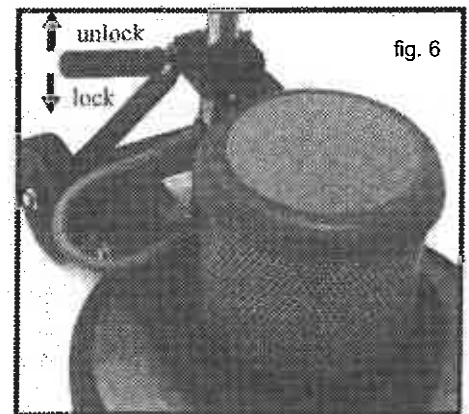


fig. 6

Handle Cam Lock Adjustment

With the handle cam lock in the "up" position (unlocked), tighten the adjusting nuts until there is a slight drag when the handle is raised or lowered. The tube should be locked securely when the handle lock is pressed downward (fig7).

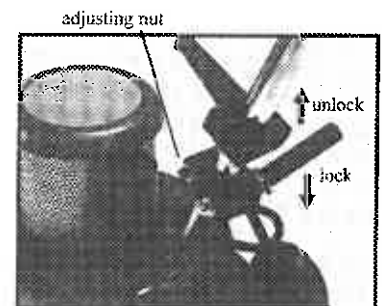


fig. 7

Controls

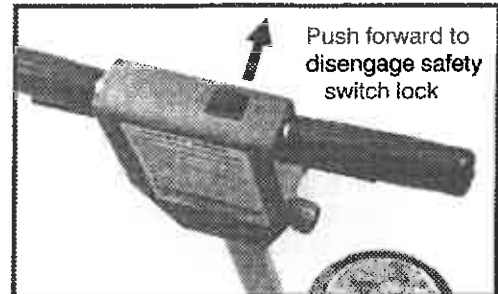
On/Off Power Switch Triggers

The ON/OFF switch is conveniently located in the form of dual triggers underneath the handle grips.

To Turn the Machine On

The operating handle must be lowered to the operating position before switching the machine ON. Place both hands firmly on the handle grips with your fingers around the power triggers. Do not apply pressure on the triggers before the safety switch lock is disengaged.

Disengage the safety switch lock by pushing it forward with one thumb. Then, while holding the safety switch lock in disengaged position, squeeze the power triggers toward the handle grips and return your thumb to the handle grip.



To stop the machine, simply release the triggers. The safety switch lock will automatically return to the engaged position.

Using the SS2015DS

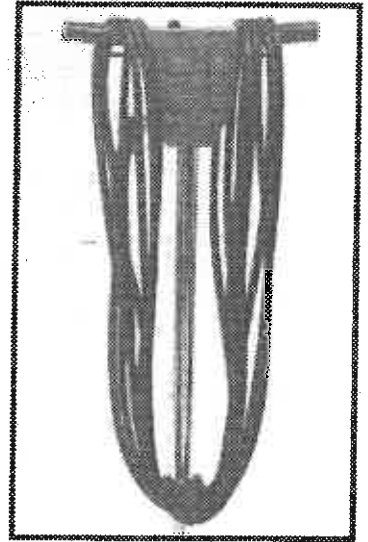
The SS2015DS is a two-speed floor machine designed for dual operation, scrubbing or buffing. A toggle switch on the left side of the switch box selects the output speed, 175 RPM for scrubbing or 300 RPM for buffing. Do not operate this floor machine for buffing in low speed, it will not do an effective job and tends to overload the motor unnecessarily.

Guidelines for Operation

- ♦ Your floor machine is a very sensitive, powerful unit. When in operation, it should be guided gradually and smoothly without sudden or rough motions. You will want to practice with your machine on a smooth surface until you have experience in operating it.
- ♦ For ease of operation, always keep the pad or brush surface level, balanced, and flat on the floor at all times.
- ♦ Always adjust the operating handle to a comfortable height at which the brush or pad surface is balanced before starting the machine. See Handle Adjustment.
- ♦ Your floor machine will operate differently on various surfaces. For example, there will be much more resistance when the machine is used with a brush on carpeted surfaces than when it is used with a pad on a smooth surface. The operator should be prepared to adjust for these differences.
- ♦ **BEGIN OPERATING THE FLOOR MACHINE WITH THE BRUSH OR PAD SURFACE LEVEL, BALANCED AND FLAT ON THE FLOOR.**
- ♦ To move the machine to the right, slowly apply slight upward pressure on the handle.
- ♦ To move the machine to the left, slowly apply slight downward pressure on the handle.
- ♦ To move the machine forward or backward, keep brush or pad flat on the floor and push or pull machine in the desired direction.
- ♦ **DO NOT LET THE MACHINE REST ON THE PAD OR BRUSH FOR AN EXTENDED PERIOD OF TIME.** This may alter the shape of the pad or brush which may cause the machine to wobble.

Cord Storage

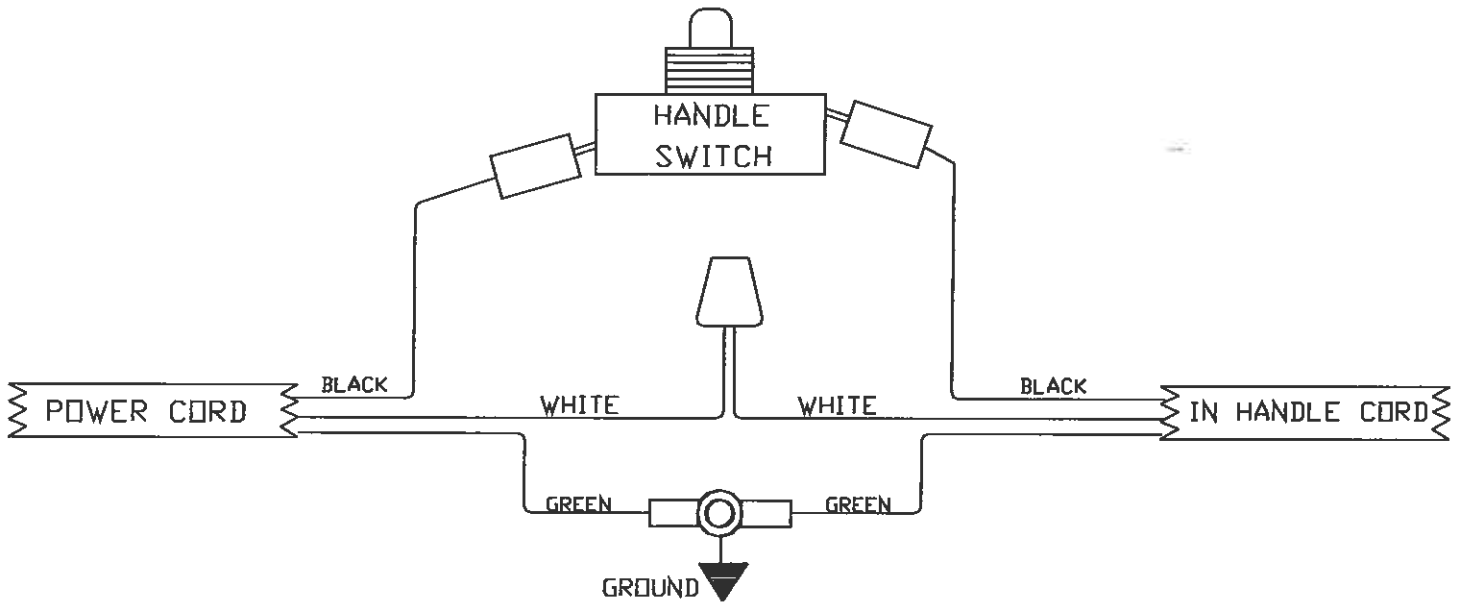
When not in use, loosely wind the power cord around the cord storage hook on the handle shaft and both of the handle grips, as shown.



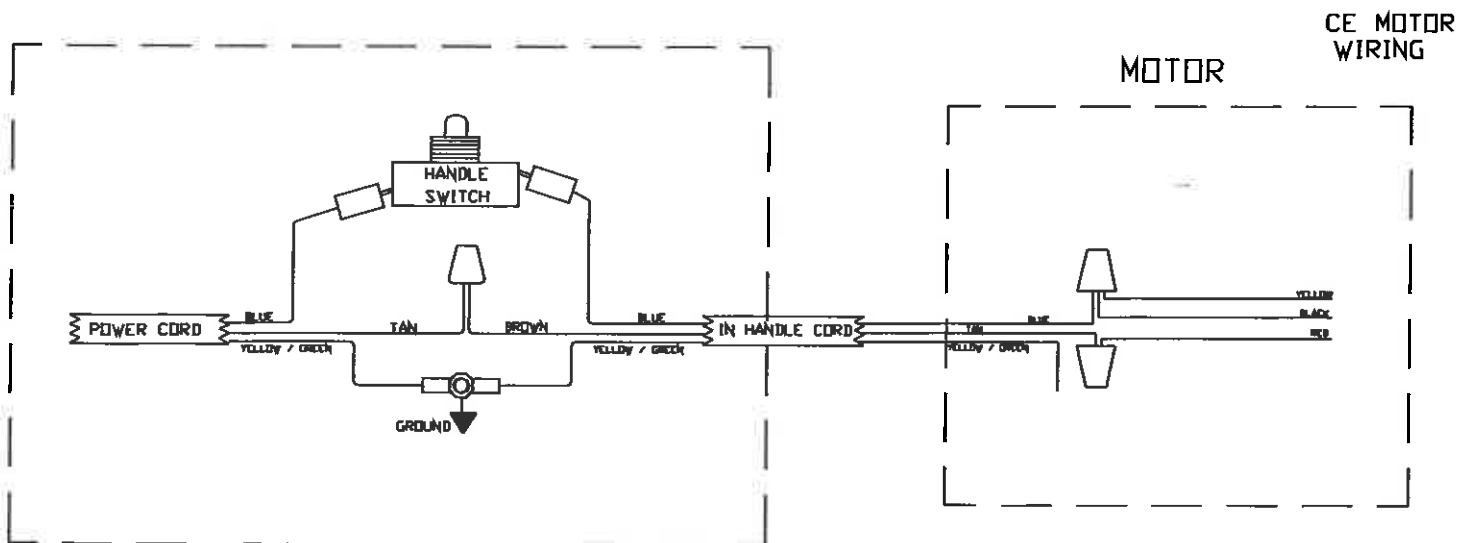
Clean Up and Storage

After use, your floor machine can be wiped clean with a soft, damp cloth and should be stored in a clean, dry place.

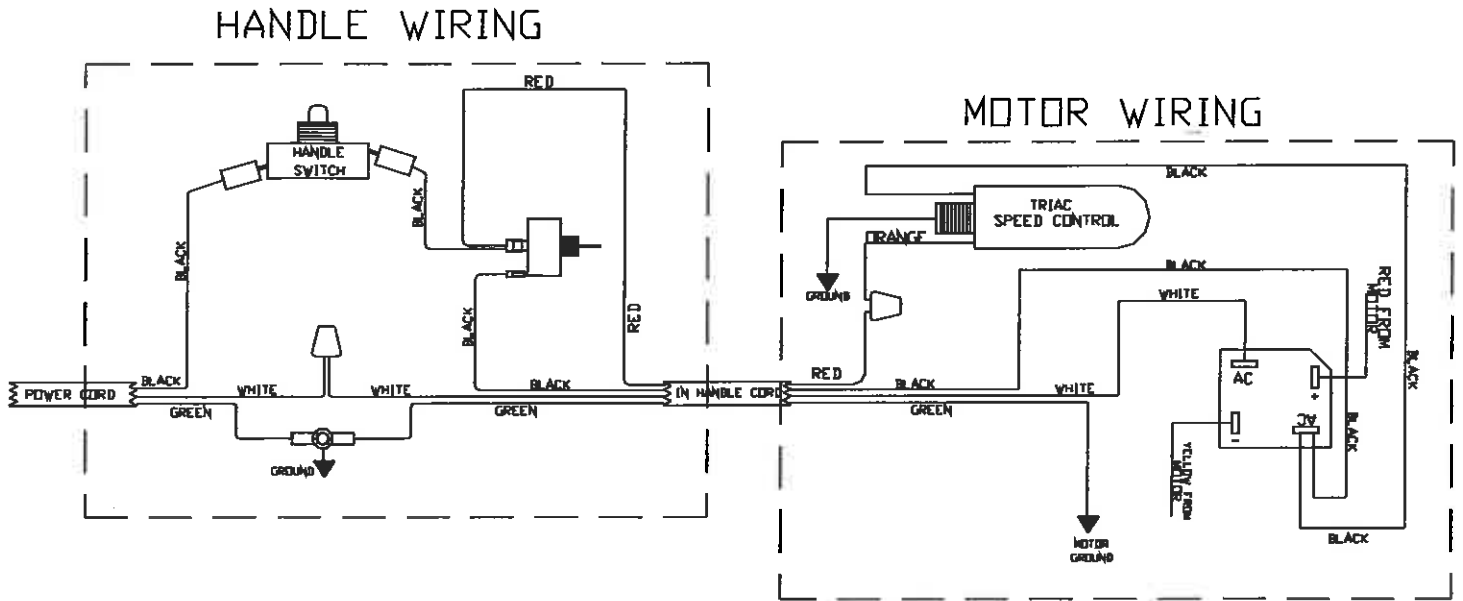
Wiring Diagram: SS1715, SS2010, SS2015



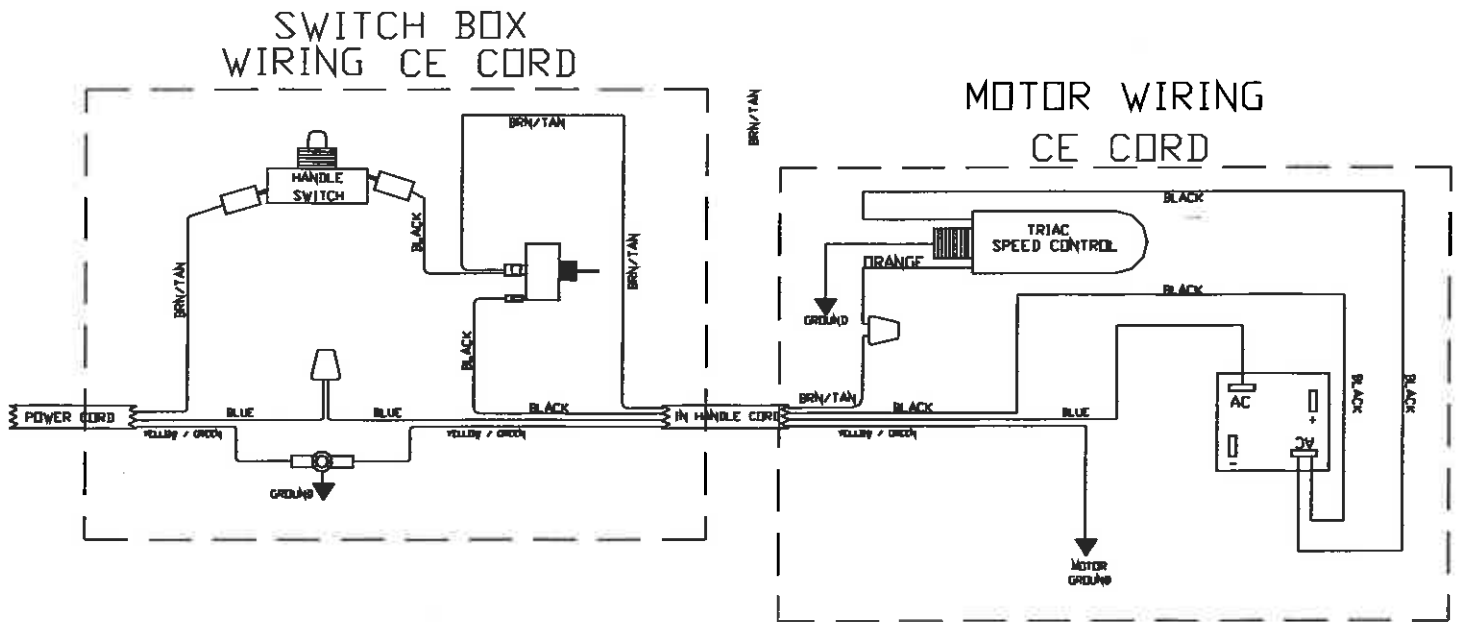
Wiring Diagram: SS1715E, SS2010E, SS2015E



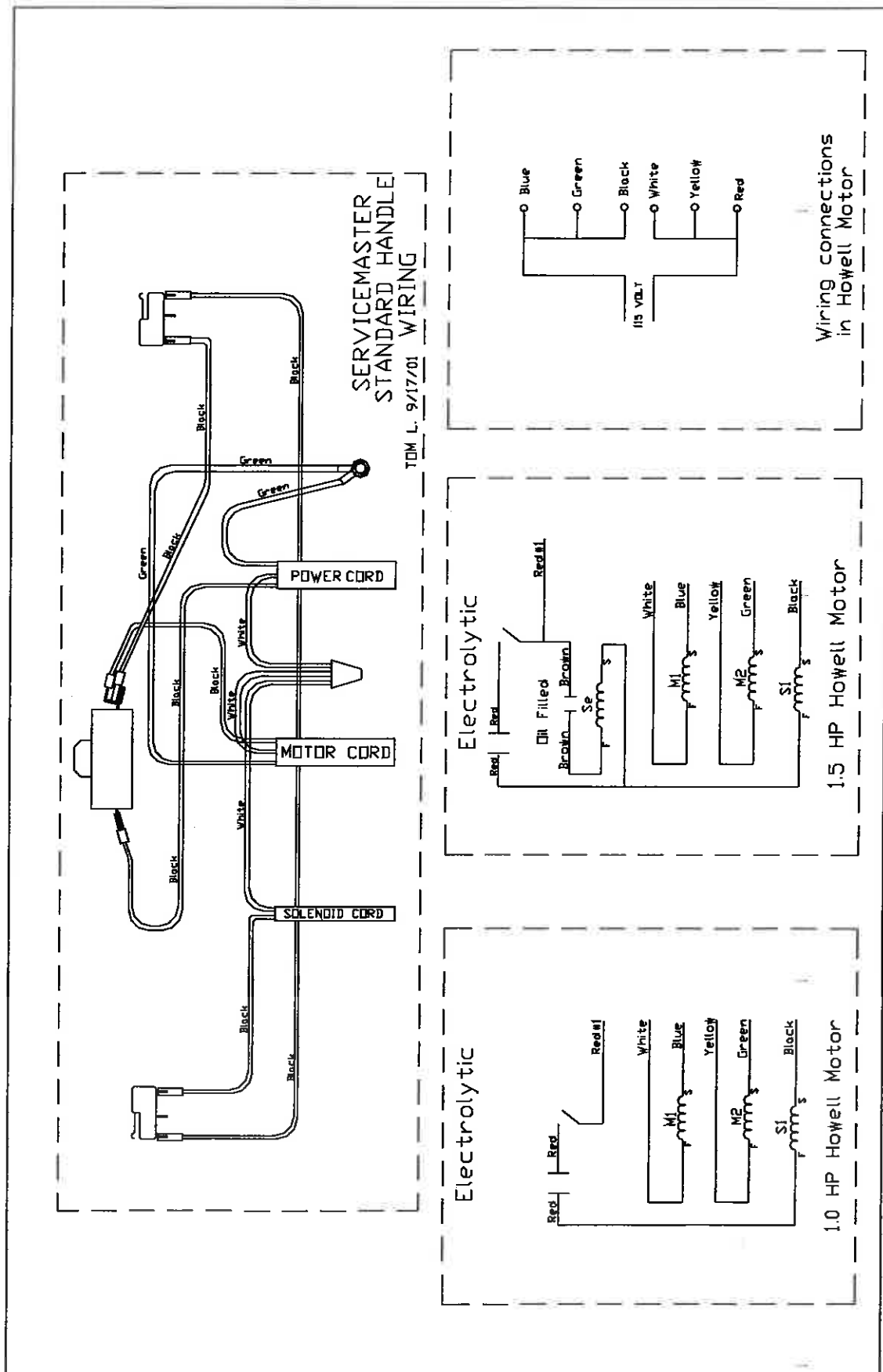
Wiring Diagram: SS2015DS



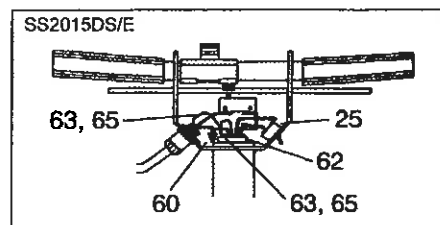
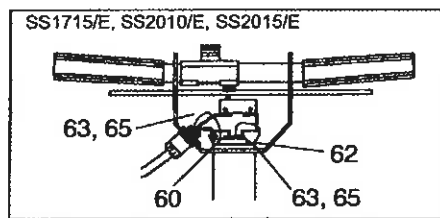
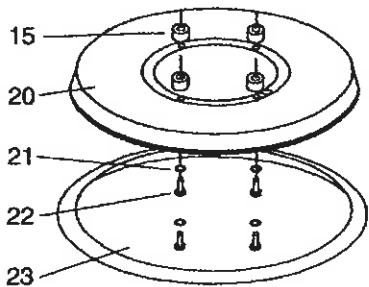
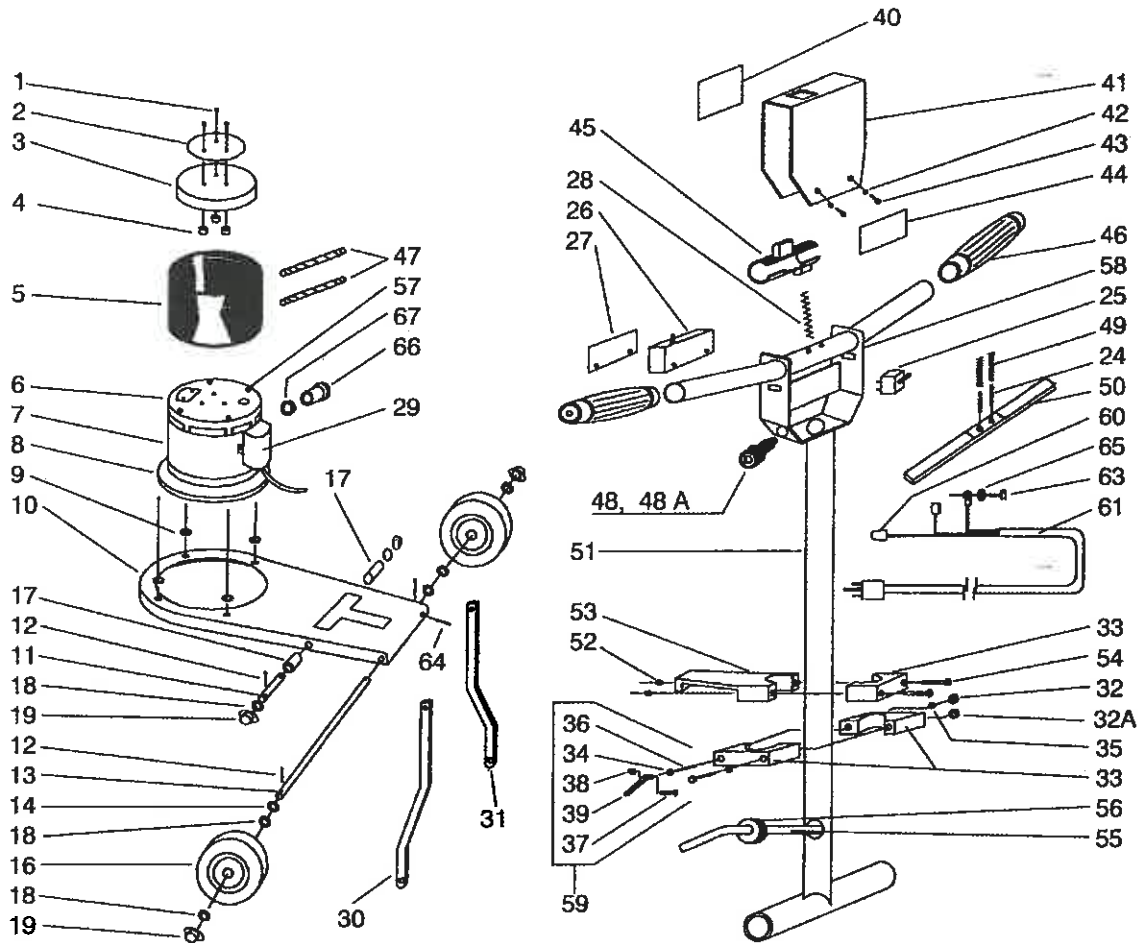
Wiring Diagram: SS2015DSE



Wiring Diagram: SS2015HS



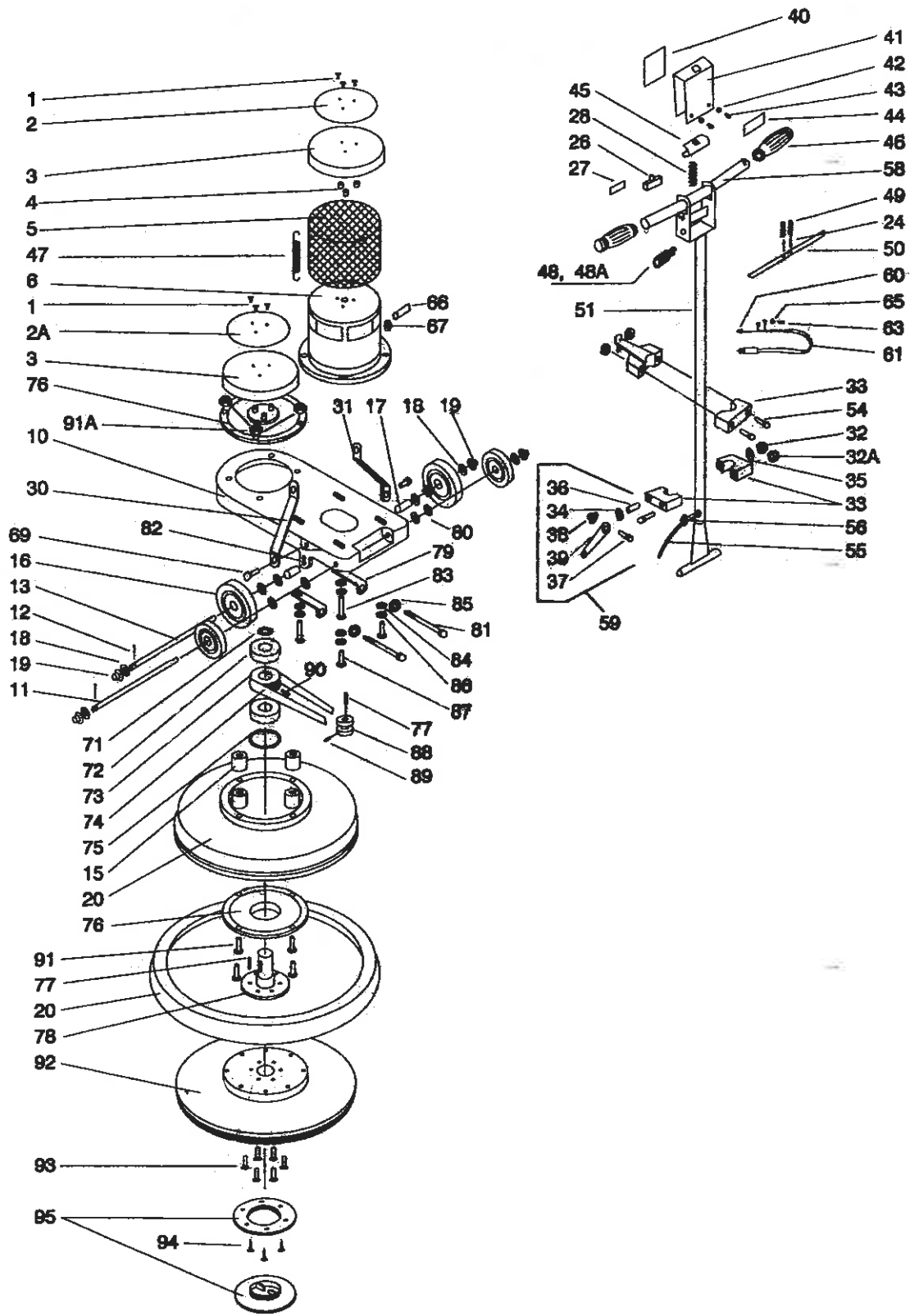
Machine Assembly: SS1715/E, **SS2010/E**, SS2015/E, SS2015DS/E



Parts List: SS1715/E, SS2010/E, SS2015/E, SS2015DS/E

Ref.	Part #	Description	Qty.	Ref.	Part #	Description	Qty.
1	H0002	Screw 10-24 x 1" (SS2010/E, SS2015DS/E)	3	41	n/a	Cover Asm., Switchbox	1
	H0040	Screw 10 - 24 x .5" (SS1715/E,SS2015/E)	3	42	H0020	Lockwasher, #10 Ext Tooth	3
2	n/a	Label, Inld, 6.5" dia.	1	43	H0040	Screw, 10-24 x 0.50 Pan Head	2
2A	n/a	Label, 1500 RPM	1	44	L0005	Label, Warning	1
3	n/a	Cover, Drip-Motor	1	45	C0003	Switch, Safety	1
4	H0003	Spacer, Drip Cover (SS2010/E, SS2015DS/E)	3	46	C0007	Handle Grip, Black	2
	H0058	Spacer, Drip Cover (SS1715/E, SS2015/E)	3	47	H0049	Spring, Clamp (SS2015DS/E)	2
5	S0015	Cover, Motor Screen (SS2010/E)	1	48	E0021-1	Strain Relief	1
	SS0016	Cover, Motor Screen (SS2015DS/E)	1	48A	H0022	Nut, Strain Relief	1
6	EE0032	Motor and Gear Unit Asm. (SS2015DS/E)	1	49	H0023	Spring, Trigger	2
	EE0038	Motor and Gear Unit Asm. (SS2010/E)	1	50	S0008P	Trigger	1
	EE0043	Motor and Gear Unit Asm. (SS1715/E, SS2015/E)	1	51	W0002P	Handle Weldment	1
7	n/a	Motor Only	1	52	H0024	Nut, 3/8" - 16	2
8	G0001	Gear Unit, 10:1, 2-Idler-Black (SS2010/E)	1	53	C0008P	Cord Hook Body	1
	G0002	Gear Unit, 10:1, 3-Idler-Black (SS1715/E, SS2015/E)	1	54	H0025	Screw, 3/8"-16 x 2.0 Socket Cap	3
9	H0005	Lockwasher, 5/16", ID, Ext Tooth	4	55	E0012-1	In-Handle Cord, CE Approved (SS2015DS/E)	1
10	W0001P	Frame-Floor Machine	1	56	H0028	Grommet	1
11	M0006P	Shaft Handle	1	57	H0026	Screw, Motor - 1/4"-20 x 6 3/4 (SS1715/E, SS2010/E, SS2015/E)	4
12	H0006	Cotter Pin	4	58	E0010	Handle Asm., Complete	1
13	M0005P	Shaft, Axle	1	59	H0030	Cam Lock Asm., Incl 34,36,37,38,39	1
14	H0007	Spring Washer	2	60	H0027	Nut, Wire	1
15	M0004	Spacer, Frame/Brush Cover	4	61	EE0031	Power Cord, 16-23 220V	1
16	C0004	Wheel, 5" dia.	2		EE0031-1	Power Cord, CE approved (E models)	1
17	M0003	Spacer	2	62	H0029	Clamp, Power Cord	1
18	H0008	Steel Washer, 33/64" x 7/8"	12		H0047	Clamp, Power Cord (SS2015DS/E)	1
19	H0009	NutPush -0.50"	4	63	H0040	Screw, 10-24 x 0.50	2
20	n/a	Brush Cover	1	64	H0031	Cotter Pin	1
21	H0010	Lockwasher, 5/16" ID	4	65	H0020	Lockwasher, #10 Ext Tooth	1
22	H0011	Screw, 5/16" x 2.0 Soc Hd	4	66	H0050	Strain Relief (SS2015DS/E)	1
23	C0001	Bumper, 17" Black (SS1715/E)	1	67	H0022	Nut, Strain Relief (SS2015DS/E)	1
	C0002	Bumper, 20" Black (SS2010/E, SS2015/E, SS2015DS/E)	1	Not Shown, SS2015DS/E			
24	H0012	Roll Pin	2		EE036-1	Triac Speed Control	
25	E0006	Switch Pin (SS2015DS/E)	1		EE0041-1	220v 50C Carbon Brush Set	
26	E0007	Switch, ON/OFF	1		EE0036-1	220v 50C Speed Control	
27	H0013	Insulation, Switch	1		EE0035-1	220v 50C Rectifier	
28	H0014	Spring	1				
29	E0039	Capacitor (Start/Run) (SS2010/E)	1				
	E0044	Capacitor (Start) (SS1715/E, SS2015/E)	1				
	E0045	Capacitor (Run) (SS1715/E, SS2015/E)	1				
30	S0006P	Connecting Leg - Left	1				
31	S0005P	Connecting Leg- Right	1				
32	H0015	Nut, 3/8" - 16 Hex Nyloc Standard	1				
32A	H0057	Nut, 3/8" - 16 Hex Nyloc Thin	1				
33	C0006P	Clamp, Handle Lock	1				
34	H0001P	Washer, Hardened Slotted	1				
35	H0016	Washer, 3/8"	3				
36	H0017	Stud, Clamp	1				
37	H0018	Rivet, 5/16" x 1.25 Long Rd Head	1				
38	H0019	Push Nut 5/16"	1				
39	M0001P	Cam. HandleLock	1				
40	n/a	Label, Switchbox	1				

Machine Assembly: SS2015HS/E



Parts List: SS2015HS/E

Ref.	Part #	Description	Qty.	Ref.	Part #	Description	Qty.
1	H0002	Screw 10-24 x 1"	3	61	EE0031	Power Cord, 16-23 220V	1
2	n/a	Label, Incl, 6.5" dia.	1		EE0031-1	Power Cord, CE approved (E models)	1
2A	n/a	Label, 1500 RPM	1	62	H0029	Clamp, Power Cord	1
3	n/a	Cover, Drip-Motor	1	63	H0040	Screw, 10-24 x 0.50	2
4	H0003	Spacer, Drip Cover	3	64	H0031	Cotter Pin	1
5	SS0016	Cover, Motor Screen	1	65	H0020	Lockwasher, #10 Ext Tooth	1
6	EE0033	Motor and Gear Unit Asm.	1	66	H0050	Strain Relief	1
10	W0004P	Frame-Floor Machine	1	67	H0022	Nut, Strain Relief	1
11	M0018P	Shaft Handle	1	68	H0057	0.375 - 16 Nyloc Nut	4
12	H0006	Cotter Pin	4	69	H0043	0.375 - 16 x 1.50 Long Hex Bolt	2
13	M00017P	Shaft, Axle	1	70	H0015	0.375 - 16 Nyloc Nut	2
15	M0004	Spacer, Frame/Brush Cover	4	71	H0045	External Retaining Ring	1
16	C0004	Wheel, 5" dia.	2	72	M0019	Ball Bearing	2
17	M0003	Spacer	2	73	M0014	Pulley	1
18	H0008	Steel Washer, 33/64" x 7/8"	12	74	C0014	Belt	1
19	H0009	NutPush -0.50"	4	75	H0048	Tension Washer	1
20	n/a	Brush Cover	1	76	C0011M	Bearing Housing	2
23	C0002	Bumper, 20" Black	1	77	H0053	Square Key	2
24	H0012	Roll Pin	2	78	W0005P	Drive Shaft	1
26	E0007	Switch, ON/OFF	1	79	S0019P	Belt Adjustment Bracket	2
27	H0013	Insulation, Switch	1	80	H0008	Washer 33/64" x 7/8"	8
28	H0014	Spring	1	81	H0056	Bolt 1/4 -20 x 6.0" long	2
30	S00017P	Connecting Leg - Left	1	82	H0051	Set Screw 1/4 - 20 x 0.50"	2
31	S00018P	Connecting Leg- Right	1	83	H0042	Bolt 0.375 - 16 x .0875" long	2
32	H0015	Nut, 3/8" - 16 Hex Nyloc Standard	1	84	H0004	Lock Washer Split 0.375"	4
32A	H0057	Nut, 3/8" - 16 Hex Nyloc Thin	1	85	H0054	Lock Washer Split 0.250"	2
33	C0006P	Clamp, Handle Lock	1	86	H0060	Flat Washer 0.375"	4
34	H0001P	Washer, Hardened Slotted	1	87	H0041	Bolt 0.375 - 16 x 0.750" long	2
35	H0016	Washer, 3/8"	3	88	M0015	Pulley	1
36	H0017	Stud, Clamp	1	89	H0052	Set Screw 0.312 - 18 x 0.375" long	2
37	H0018	Rivet, 5/16" x 1.25 Long Rd Head	1	90	H0051	Set Screw 0.250 - 20 x 0.500" long	1
38	H0019	Push Nut 5/16"	1	91	H0044	Bolt 0.375 - 16 x 2 1/2" long	4
39	M0001P	Cam. HandleLock	1	92	C0012	Pad Driver - Flex	1
40	n/a	Label, Switchbox	1	93	H0032	Flat Head Cap Screw 1/4 - 28 x 1"	6
41	n/a	Cover Asm., Switchbox	1	94	H0059	Sheet Metal Screw #8 Pan Head 3/4"	3
42	H0020	Lockwasher, #10 Ext Tooth	3	95	C0013	Pad Centering & Retaining Clamp	1
43	H0040	Screw, 10-24 x 0.50 Pan Head	2				
44	L0005	Label, Warning	1				
45	C0003	Switch, Safety	1				
46	C0007	Handle Grip, Black	2				
47	H0049	Spring, Clamp	2				
48	E0021-1	Strain Relief	1				
48A	H0022	Nut, Strain Relief	1				
49	H0023	Spring, Trigger	2				
50	S0008P	Trigger	1				
51	W0002P	Handle Weldment	1				
52	H0024	Nut, 3/8" - 16	2				
53	C0008P	Cord Hook Body	1				
54	H0025	Screw, 3/8"-16 x 2.0 Socket Cap	3				
55	E0028-1	In-Handle Cord, CE Approved	1				
56	H0028	Grommet	1				
58	E0010	Handle Asm., Complete	1				
59	H0030	Cam Lock Asm., Incl 34,36,37,38,39	1				
60	H0027	Nut, Wire	1				

Not Shown

- EE036-1 Triac Speed Control
- EE0041-1 220v 50C Carbon Brush Set
- EE0036-1 220v 50C Speed Control
- EE0035-1 220v 50C Rectifier

Pioneer Eclipse

LIMITED WARRANTY SWING STAR/BUFF STAR MODELS TO QUALIFY FOR THIS WARRANTY:

- 1) Machine must be registered at the time of purchase on a form provided by Pioneer Eclipse Corporation. Your Pioneer Eclipse Distributor is responsible for the registration of your machine. Please cooperate with your distributor in supplying necessary information on the card.
- 2) The machine must have been purchased from Pioneer Eclipse or an authorized Pioneer Eclipse Distributor.
- 3) This warranty extends to the original purchaser only and is not transferable to subsequent owners.

TIME PERIODS

THREE (3) YEAR PARTS (ONE (1) YEAR LABOR - Warranted for the forementioned time periods to be free from defects in material and workmanship from the date of purchase by the original owners. (See Exclusions.)

EXCLUSIONS (Not Covered by Warranty)

- 1) Parts that fail through normal wear by reason of their characteristics (pads, brushes, belts, bumpers, skirting, or other consumable parts).
- 2) This warranty does not extend to parts affected by misuse, neglect, abuse or improper maintenance. All defective parts must be returned to the Distributor for credit.
- 3) Electric motors warranted by motor manufacturer.

THE OBLIGATION OF PIONEER ECLIPSE CORPORATION

- 1) The obligation of Pioneer Eclipse under this warranty is limited to repairing or replacing, at its option, any part which is proven to be defective in material or workmanship under normal use for the applicable period stated above.
- 2) Warranty repairs will be made by your Pioneer Eclipse Distributor without charge for parts and labor.
- 3) Parts repaired or replaced under this warranty are warranted only during the balance of the original warranty period. All defective parts replaced under these warranties become the property of Pioneer Eclipse.

WARRANTY SERVICE

To obtain warranty service, take your machine and proof of purchase to any authorized Pioneer Eclipse Distributor, preferably to the distributor from whom the machine was purchased. For the Distributor in your area, call Pioneer Eclipse Customer Service Department at 800-367-3550. If you are dissatisfied with the service that you receive, call or write Pioneer Eclipse Customer Service Department for further assistance.

DISCLAIMER OF CONSEQUENTIAL

PIONEER ECLIPSE DISCLAIMS ANY RESPONSIBILITY FOR LOSS OF USER TIME OF THE PIONEER ECLIPSE MACHINE OF ANY OTHER INCIDENTAL OR CONSEQUENTIAL DAMAGE EXCEPT AS STATED IN THE WARRANTY APPLICABLE TO EACH MACHINE. EXCEPT AS STATED IN SUCH WARRANTIES, THE COMPANY DOES NOT OTHERWISE WARRANT ANY MACHINE AND NO WARRANTY, EXPRESS, IMPLIED OR STATUTORY IS MADE BY THE COMPANY.

Pioneer Eclipse

**P.O. Box 909
Sparta, NC 28675
1-800-367-3550, 1-336-372-8080
Fax: 1-336-372-2895**

CE Certification applies only to machines for export as indicated by E extension on part number.
Machine Directive 98/37/EC as amended by Directive 89/392/EEC, Directive 91/368/EEC, Directive 93/44/EEC,
and by Directive 93/68/EEC; EMC Directive 89/336/EEC, rectified by 389LO336R(01) and amended by 91/263/EEC, 92/31/EEC
and 93/68/EEC. Low Voltage directive 73/23/EEC amended by 93/68/EEC.